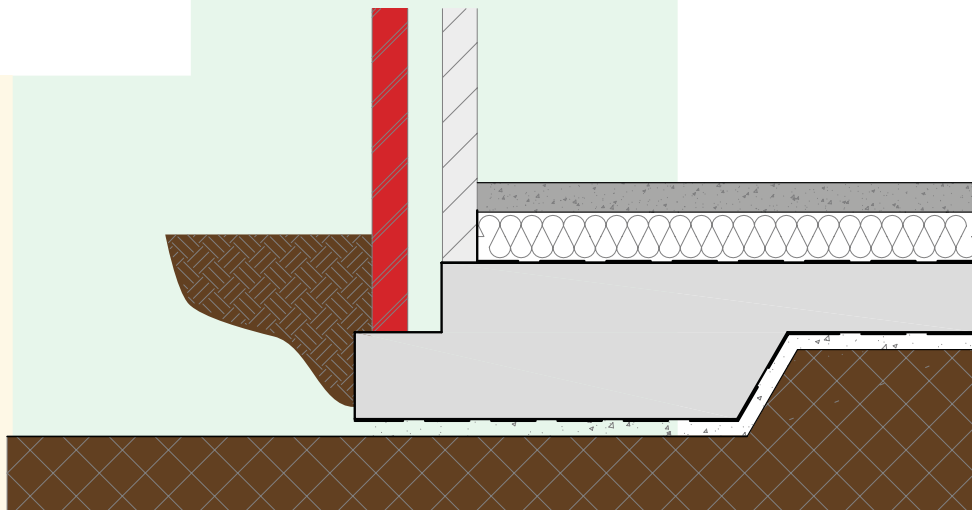


**GROUNDWORK**  
ENGINEERED SYSTEMS

# ONEFORM

UNIQUE SLAB  
EDGE FORMWORK



UK Registered Design No: 6015287

# Take a **step up: use OneForm**

## The unique 'one hit' formwork method to form steel reinforced stepped concrete slabs

From your construction drawings we will fabricate a unique, lightweight, easy to install stepped slab edge shutter. OneForm is flat packed and delivered to site with installation instructions.

The OneForm method of creating a stepped concrete foundation slab, has numerous advantages over traditional timber, with many on-site labour savings, i.e. storage, cleaning, no second pour.

OneForm can also be adapted to connect to the DPM.



Internal / external corners can be formed on site

Each delivery will be accompanied by installation instruction.

Trade Mark Application No: UK00003269721



📍 When installed and secured as instructed, we are ready for the concrete pour.

Note: A vibrating poker can be used carefully, allowing concrete to enter the outer edges of the 'toe' area.



📍 Once the pour has been completed, floated, and concrete is cured, the slab is ready for the structure.

UK Registered Design No: 6015287



# ONEFORM

UNIQUE SLAB EDGE FORMWORK



Contact our technical department on  
**Telephone: 01457 863 444**  
**Email: [admin@groundworkeng.co.uk](mailto:admin@groundworkeng.co.uk)**